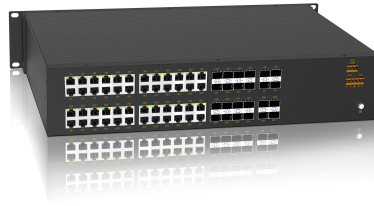


SICOM3448G

48G+4X ports Layer 2 managed rack mountable switch



»» Overview

SICOM3448G is a full Gigabit layer 2 managed industrial Ethernet switch designed to operate reliably in climatically demanding utility and industrial environments. SICOM3448G is a 19-inch 2U rack mountable device, supports 4 10gigabit ports + 20 gigabit combo ports + 28 gigabit copper ports, or 4 10gigabit ports + 8 gigabit combo ports + 24 gigabit SFP ports + 16 gigabit copper ports. SICOM3448G supports many Layer 2 software features such as port, VLAN, multicast, QoS, fast redundant ring. It supports Console, Telnet, Web management and network management software based on SNMP. At present, the product is widely used at the oil & gas, distribution network automation and many other industrial communication systems.

»» Key Features

Supports max 4 10Gigabit ports, 48 Gigabit ports

Supports DT-Ring ,DRP, RSTP/MSTP for network redundancy.

EMC Level 3

IP30 protection

CE,FCC

» Product Specifications

> Technical specifications

- Industry standard

EMI

FCC CFR47 Part 15, EN55022/CISPR22, Class A

EMS

IEC61000-4-2(ESD) $\pm 6\text{kV}$ (contact), $\pm 8\text{kV}$ (air)

IEC61000-4-3(RS) 10V/m(80MHz-2GHz)

IEC61000-4-4(EFT) Power Port: $\pm 2\text{kV}$; Data Port: $\pm 1\text{kV}$

IEC61000-4-5(Surge) Power Port: $\pm 1\text{kV}/\text{DM}$, $\pm 2\text{kV}/\text{CM}$; Data Port: $\pm 2\text{kV}$

IEC61000-4-6(CS) 10V(150kHz-80MHz)

IEC61000-4-8(power frequency magnetic field) 30A/m(cont.)

Machinery

IEC60068-2-6 (vibration)

IEC60068-2-27 (shock)

IEC60068-2-32 (free fall)

- Approvals

CE, FCC

- Quality assurance

MTBF 547500h

Warranty 5 years

- Environmental limits

Operating temperature -20°C to $+60^{\circ}\text{C}$

Storage temperature -40°C to $+85^{\circ}\text{C}$

Ambient Relative Humidity 5% to 95% (non-condensing)

- Physical Characteristics

Housing Metal

Cooling Natural cooling, fanless

Protection Class IP30

Dimensions

(W×H×D) 482.6mm×88mm×325mm

Weight < 11 Kg

Mounting 19 inch 2U rack mounting

-Power Requirements

Power input 100-240VAC,50/60Hz;110-220VDC (85-264VAC/77-300VDC)

Power terminal 5-pin 5.08 mm-spacing plug-in terminal block

Power consumption <72W

Overload protection Support

Reverse connection protection Support

Redundancy protection Support

-LED

LED on front panel

Alarm LED: Alarm

Running LED: Run

Power LED: PWR1, PWR2

Port LED: Link/ACT

Port speed LED: Speed

LED on rear panel

Port LED: Link/ACT

Port speed LED: Speed

-Interface

10 Gigabit ports 10GBase-X, SFP+ port

Gigabit ports 1000Base-X, 100Base-FX, SFP port

10/100/1000Base-T(X), RJ45 port

Console port RS232,RJ45

Alarm contact 3-pin 5.08mm-spacing plug-in terminal block, 250 VAC/220 VDC Max, 2 A Max,

10A@1s, 60 W Max

-Switch properties

Priority queue 8

Number of VLANs 4K

VLAN ID 1 ~ 4093

Number of multicast groups 8K

MAC table 8K

Packet buffer 32Mbit

Packet forwarding rate 130.9Mpps

Switching delay <5 μ s

-Standard

IEEE 802.3i (10Base-T)

IEEE 802.3u (100Base-T)

IEEE 802.3ab (1000Base-T)

IEEE 802.3ad (port aggregation)

IEEE 802.3z (1000Base-SX/LX)

IEEE 802.3x (flow control)

IEEE 802.1p (priority)

IEEE 802.1Q (VLAN)

IEEE 802.1d(STP)

IEEE 802.1w (RSTP)

IEEE 802.1s (MSTP)

>Software functions

-IP address management

Supports DHCP server/snooping/client

-Management and maintenance

Supports Console, Telnet, and Web management methods.

Supports SNMPv1/v2c/v3 and can managed by Kyvision.

Supports file transfer and software update over SFTP,TFTP,HTTP,HTTPS.

Supports the IP/MAC address conflict alarm, power failure alarm, power alarm, port linkdown alarm, ring alarm

Supports port mirroring.

Supports Syslog.

Supports RMON

Supports LLDP.

Supports SNTP.

-Service quality management

Supports ACL.

Support 802.1p(CoS),DSCP

Supports SP and WRR queuing.

-Security

Supports HTTPS/SSL.

Supports SSH.

Supports user grading.

-Multicast protocol

Supports IGMP snooping.

Supports static multicast.

-Redundancy protocol

Supports DT-Ring, DT-Ring+, and DT-VLAN and the recovery time<50 ms.

Supports DRP and the recovery time<20 ms.

Supports RSTP/MSTP and compatible with STP.

-Switching function

Supports VLAN,PVLAN

Supports GVRP

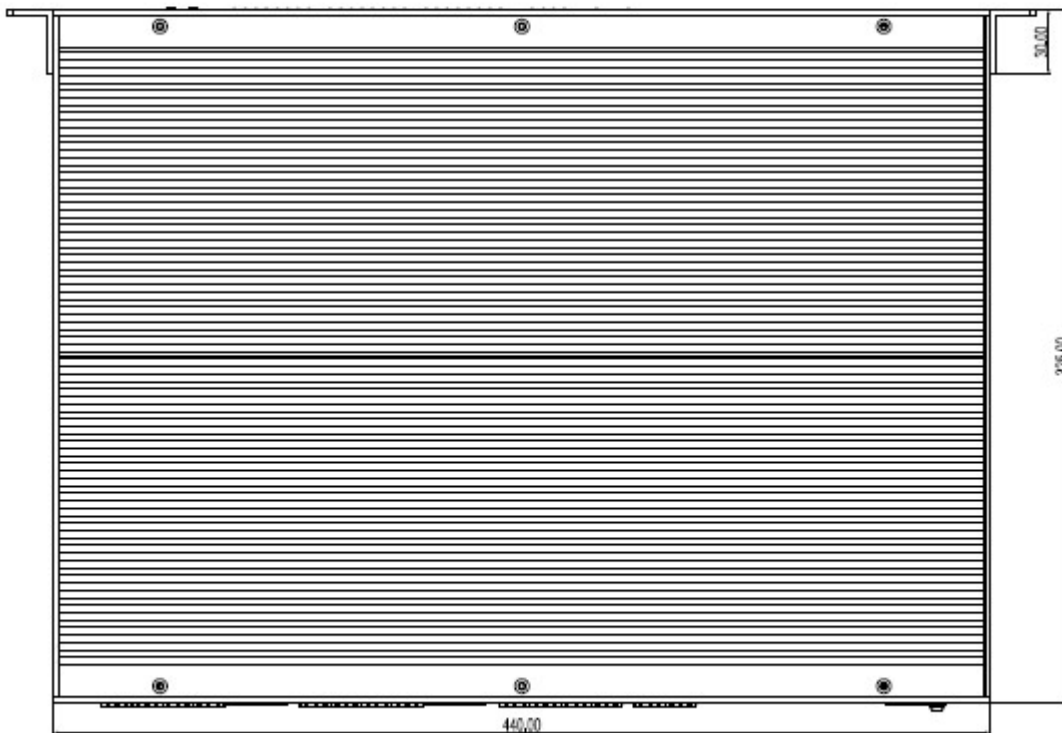
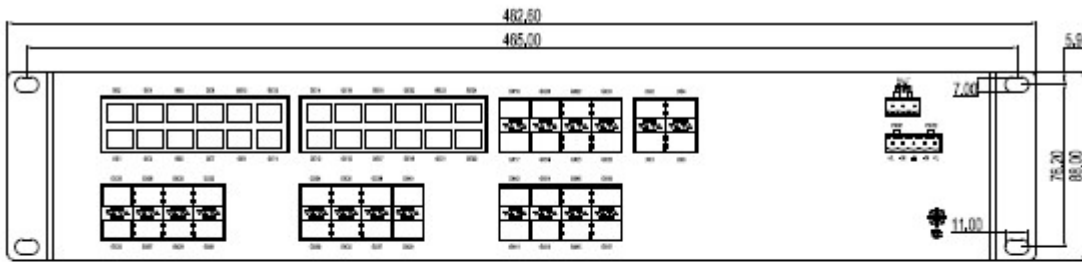
Supports port aggregation.

Supports flow control.

Supports Rate limit

Supports broadcast storm suppression.

» Mechanical Drawing



» Ordering Information

Product Model	SICOM3448G- Ports-PS1-PS2 SICOM3448G-C- Ports-PS1-PS2
Code definition	Code selection
Ports:	4X20G28GE=4×10GBase-X SFP+ ports; 20×1000Base-X,10/100/1000Base-T(X) Combo ports; 28×10/100/1000Base-T(X) RJ45 ports 4X8G24GX16GE=4×10GBase-X SFP+ ports; 8×1000Base-X,10/100/1000Base-T(X) Combo ports;24×1000Base-X SFP ports; 16×10/100/1000Base-T(X) RJ45 ports 4X8G16GE=4×10GBase-X SFP+ ports; 8×1000Base-X,10/100/1000Base-T(X) Combo ports; 16×10/100/1000Base-T(X) RJ45 ports
PS: power input	HV-HV=100-240VAC,50/60Hz;110-220VDC(85-264VAC/77-300VDC) , redundant power supply

Version:2017-09-28 10:55:31